

ACOMA CAPITAL PARTNERS

PUEBLO, COLORADO 10 ACRE PLOT

PARCEL NUM. 0502000002

(720) 724 - 4185



ACOMACAPITALPARTNERS.COM



CONFIDENTIALITY STATEMENT

1312 17th Street, Ste 2220
Denver, CO 80202

The information contained in the following offering memorandum is proprietary and strictly confidential. It is intended to be reviewed only by the party receiving it from ACOMA CAPITAL PARTNERS and it should not be made available to any other person or entity without the written consent of ACOMA CAPITAL PARTNERS, A Colorado Real Estate Company License # EC.100052724

By taking possession of and reviewing the information contained herein the recipient agrees to hold and treat all such information in the strictest confidence. The recipient further agrees that recipient will not photocopy or duplicate any part of the offering memorandum. If you have no interest in the subject property, please promptly return this offering memorandum to ACOMA CAPITAL PARTNERS. This offering memorandum has been prepared to provide summary, unverified financial and physical information to prospective purchasers, and to establish only a preliminary level of interest in the subject property. The information contained herein is not a substitute for a thorough due diligence investigation. ACOMA CAPITAL PARTNERS has not made any investigation, and makes no warranty or representation with respect to the income or expenses for the subject property, the future projected financial performance of the property, the size and square footage of the property and improvements, the presence of absence of contaminating substances, PCBs or asbestos, the compliance with local, state and federal regulations, the physical condition of the improvements thereon, or financial condition or business prospects of any tenant, or any tenant's plans or intentions to continue its occupancy of the subject property. The information contained in this offering memorandum has been obtained from sources we believe reliable; however, ACOMA CAPITAL PARTNERS has not verified, and will not verify, any of the information contained herein, nor has ACOMA CAPITAL PARTNERS conducted any investigation regarding these matters and makes no warranty or representation whatsoever regarding the accuracy or completeness of the information provided. All potential buyers must take appropriate measures to verify all of the information set forth herein. Prospective buyers shall be responsible for their costs and expenses of investigating the subject property.

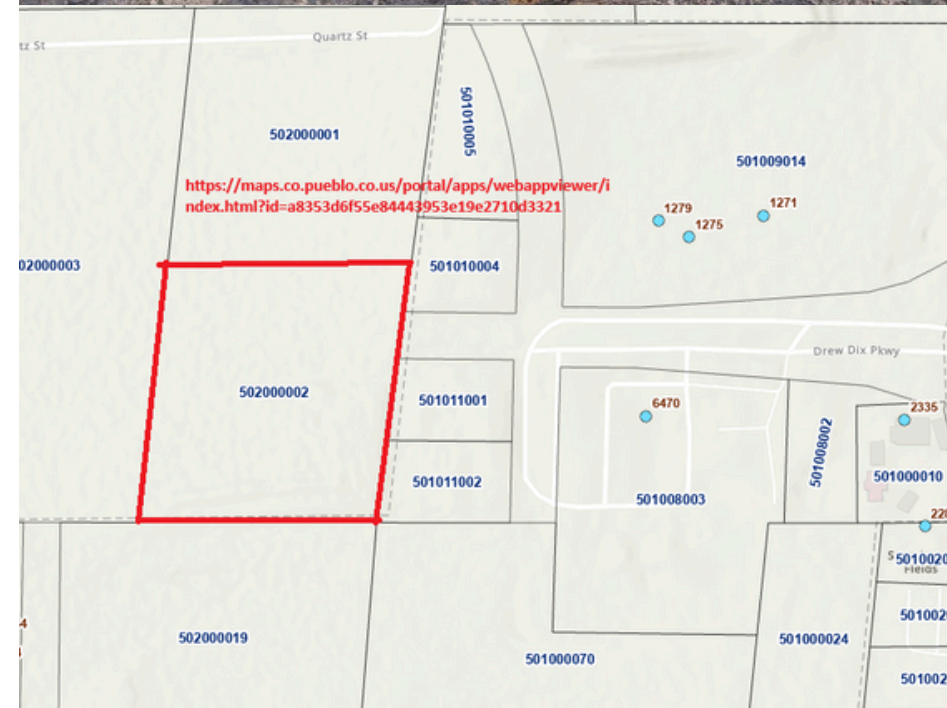
PROPERTY SHOWINGS ARE BY APPOINTMENT ONLY.

PLEASE CONTACT THE ACOMA CAPITAL PARTNERS ADVISOR FOR MORE DETAILS.

Location Highlights

10 Acre Commercial Plot

- ✔ **Situated just east of Love's Travel Stop**, offering high visibility and accessibility for travelers and local traffic.
- ✔ **Located directly off I-25**, one of Colorado's busiest transportation corridors, with easy access for northbound and southbound traffic
- ✔ **Recently completed roundabout improves entry to the area**, ensuring smooth traffic flow from I-25 and making the property more accessible for customers and visitors.
- ✔ **Adjacent to growing development** with a TA travel center just north of the parcel, enhancing the area's potential as a commercial and travel hub.



Location Information

10 Acre Commercial Plot

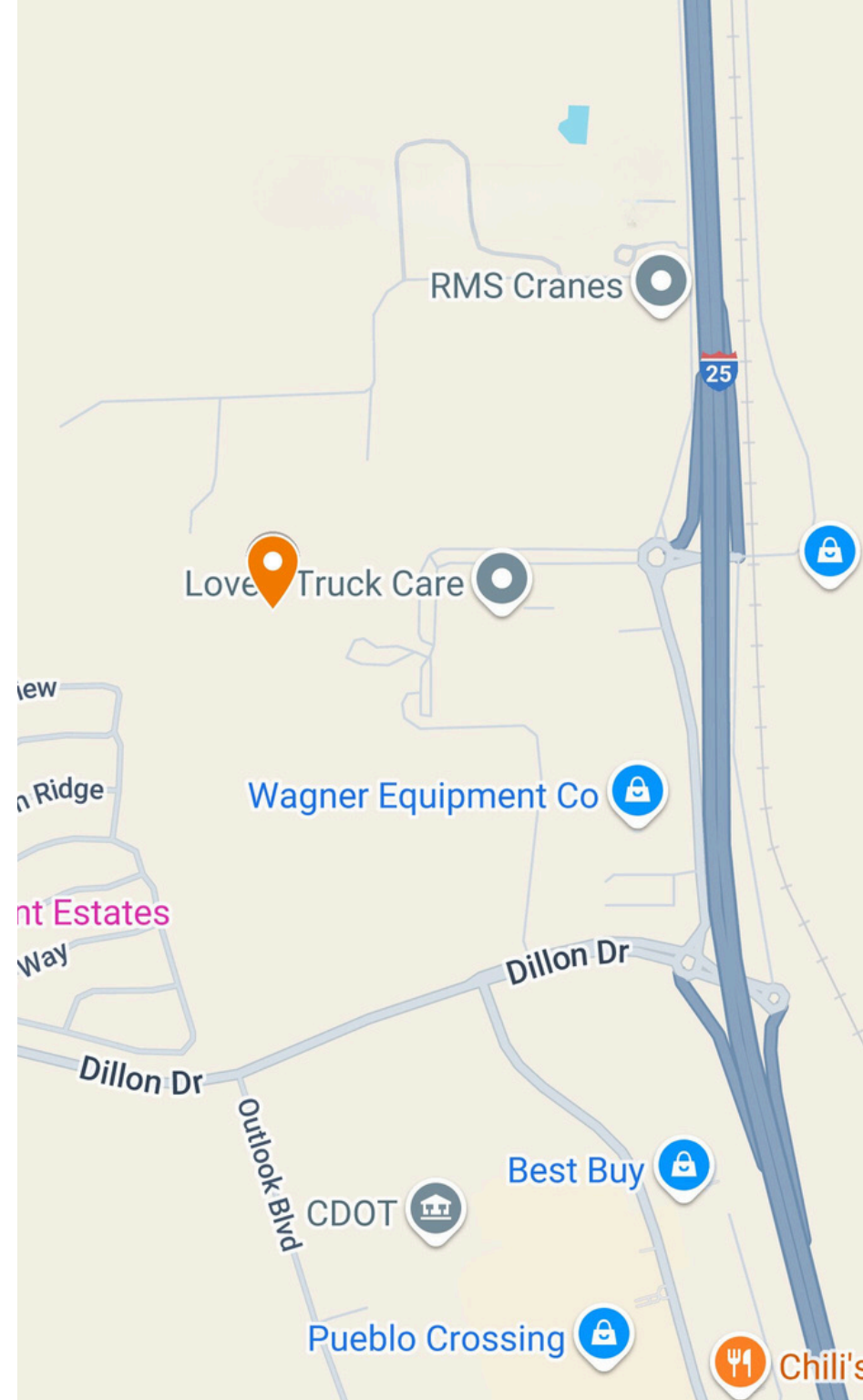
Parcel Number	0502000002
Size	10 Acres
Zoning	B3 - Commercial Highway & Arterial Business
Price	\$2,500,000.00

Traffic Count

Frontage Rd x N Elizabeth St	4,175
Dillon x N Elizabeth St	8,705
N I-25 x E Platteville Blvd N	32,082

Nearby Retailers

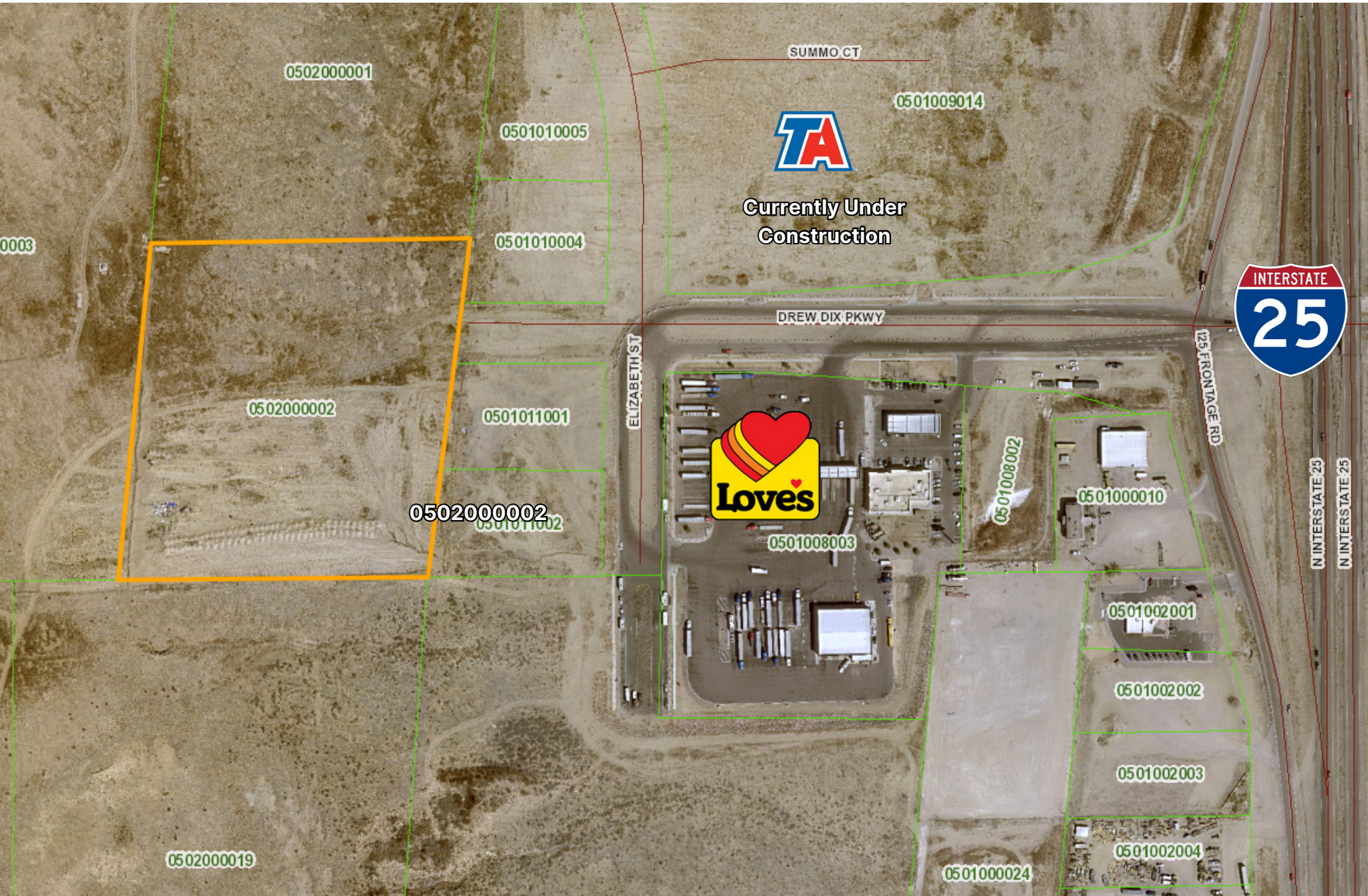
- Love's
- TA Travel Center
- Best Buy
- Dick's Sporting Goods
- Pueblo Crossing Shopping Mall



Site Surroundings



Site Surroundings





ACOMA CAPITAL PARTNERS

1312 17th Street, Ste 2220
Denver, CO 80202

www.acomacapitalpartners.com

EXCLUSIVELY PRESENTED BY



GINO RODRIGUES
Mobile: (720) 724 - 4185
ginorod@acomacapitalpartners.com
License #: EC.100052724



ASHLEY RODRIGUES
Sales
Direct: (303) 881 - 2578
ashley@acomacapitalpartners.com

